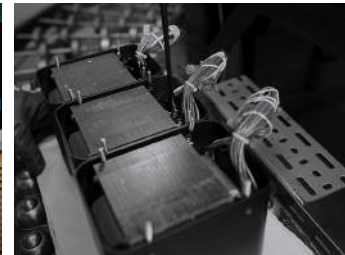


MTI100 integrated turntable

- The MTI100 Integrated Turntable is so much more than just a turntable. A one-of-a-kind product, the MTI100 is designed for those who want maximum flexibility in their home audio system but don't want – or don't have the space for – a large audio system in their home.
- Besides playing 33-1/3 and 45 rpm records, it also includes a power amplifier, a vacuum tube preamplifier, a phono preamplifier, analog and digital inputs, a Bluetooth® receiver, a subwoofer output, stereo speaker outputs, and a headphone jack.
- The dedicated phono preamplifier is housed in a custom shielding box that prevents interference or noise from seeping into the vinyl signal.
- Comes with a Sumiko Olympia Moving Magnet cartridge, whose upgraded stylus and cantilever assembly allow for more dynamic punch and improved frequency response.
- Class D amplifier is rated for 80 Watts per channel into 4 Ohms or 50 Watts per channel into 8 Ohms.
- Marries vintage vinyl records with modern music streaming via a High Definition Bluetooth input that ensures you receive the best sound quality possible from your Bluetooth device.



A Modern Home Audio System for Modern Lifestyles

McIntosh®

LEGENDARY PERFORMANCE*

www.mcintoshlabs.com

MTI100 integrated turntable

Power Output:

50 Watts per channel into 8 Ohm speakers
80 Watts per channel into 4 Ohm speakers

Total Harmonic Distortion (20Hz to 20kHz):

Amplifier: 0.2% maximum at any level from 250 milliwatts to one-half of rated power output;
0.5% maximum at any level from one-half to full rated power output

Preamplifier: 0.2% maximum

Signal to Noise Ratio:

93dB (Amplifier)
90dB (High Level)
75dB (Phono)

Dynamic Headroom:

1.0dB (8 Ohms)
1.3dB (4 Ohms)

Damping Factor:

Greater than 200 (8 Ohms)
Greater than 100 (4 Ohms)

Frequency Response:

+0, -0.7dB from 20Hz to 20kHz

Inputs & Outputs:

1 Unbalanced input
1 Unbalanced output (bridged to AMP IN)
1 Coax input
1 Optical input
1 Sub output

Tonearm:

Machined aluminum tube arm with Cardan bearing arrangement with ball bearings used for lateral and Sapphire/Tungsten for vertical bearing

Overall Dimensions (W x H x D):

19-1/4" (48.9cm) x 6-3/4" (17.15cm) x 14" (35.6cm)

Weight:

33.5 lbs (15.2kg) net,
40.5 lbs (18.4kg) in shipping carton

For the Consumer's Protection:

In order to ensure the highest level of customer satisfaction, new McIntosh products may only be purchased from an Authorized McIntosh Dealer; and, with certain limited exceptions may only be purchased over-the-counter or delivered and installed by the Authorized McIntosh Dealer. McIntosh does not warrant, in any way, products that are purchased from anyone who is not an Authorized McIntosh Dealer, or that have had their serial numbers altered or defaced.



Companion Products

The MCD350 SACD/CD Player along with the XR50 or XR100 Loudspeakers are logical companions for the MTI100 Integrated Amplifier. Your Authorized Dealer can provide additional information on other McIntosh product combinations.

To learn more, please call us at 1.800.538.6576.

McIntosh®

LEGENDARY PERFORMANCE®

www.mcintoshlabs.com